

# Pavane

(Paduana für 5 Posaunen)

Heinrich Ultrecht

3

This system contains five staves: Descant, Treble, Bass 1, Bass 2, and Bass 3. The music is in 4/4 time. The Descant staff starts with a treble clef and a key signature of one sharp (F#). The Treble staff starts with a treble clef and a key signature of one sharp. The three Bass staves start with a bass clef and a key signature of one sharp. A measure rest with the number '3' above it is placed above the Descant staff at the beginning of the system.

6 9

This system contains five staves: Descant, Treble, Bass 1, Bass 2, and Bass 3. The music continues from the first system. Measure rests with the numbers '6' and '9' above them are placed above the Descant staff. The system concludes with double bar lines and repeat dots in all staves.

12

This system contains five staves: Descant, Treble, Bass 1, Bass 2, and Bass 3. The music continues from the second system. A measure rest with the number '12' above it is placed above the Descant staff. The system concludes with double bar lines and repeat dots in all staves.

15 18

Descant

Treble

Bass 1

Bass 2

Bass 3

21

Descant

Treble

Bass 1

Bass 2

Bass 3

24

Descant

Treble

Bass 1

Bass 2

Bass 3

Descant

# Pavane

(Paduana für 5 Posaunen)

Heinrich Ulrecht



Treble

Pavane

(Paduana für 5 Posaunen)

Heinrich Ulrecht



First musical staff, measures 1-5. The key signature has one sharp (F#) and the time signature is 4/4. The notes are: 1: C4 (half), 2: D4 (quarter), E4 (quarter), 3: F#4 (quarter), E4 (quarter), 4: D4 (quarter), C4 (quarter), 5: B3 (quarter), A3 (quarter).



Second musical staff, measures 6-11. Measure 6: B3 (quarter), A3 (quarter), G3 (quarter), F#3 (quarter). Measure 7: G3 (quarter), A3 (quarter), B3 (quarter), C4 (half). Measure 8: D4 (quarter), E4 (quarter), F#4 (quarter), G4 (quarter). Measure 9: G4 (quarter), F#4 (quarter), E4 (quarter), D4 (quarter). Measure 10: C4 (half), B3 (quarter). Measure 11: A3 (quarter), G3 (quarter), F#3 (quarter), E3 (quarter). A repeat sign is present at the end of measure 11.



Third musical staff, measures 12-17. Measure 12: D4 (quarter), E4 (quarter), F#4 (quarter), G4 (quarter). Measure 13: A4 (quarter), B4 (quarter), C5 (quarter), B4 (quarter). Measure 14: A4 (quarter), G4 (quarter), F#4 (quarter), E4 (quarter). Measure 15: D4 (quarter), C4 (quarter), B3 (quarter), A3 (quarter). Measure 16: G3 (quarter), F#3 (quarter), E3 (quarter), D3 (quarter). Measure 17: C3 (half), B2 (quarter). A repeat sign is present at the end of measure 17.



Fourth musical staff, measures 18-21. Measure 18: C4 (half), B3 (quarter), A3 (quarter), G3 (quarter). Measure 19: F#3 (quarter), E3 (quarter), D3 (quarter), C3 (quarter). Measure 20: B2 (quarter), A2 (quarter), G2 (quarter), F#2 (quarter). Measure 21: E2 (quarter), D2 (quarter), C2 (quarter), B1 (quarter). A repeat sign is present at the beginning of measure 18.



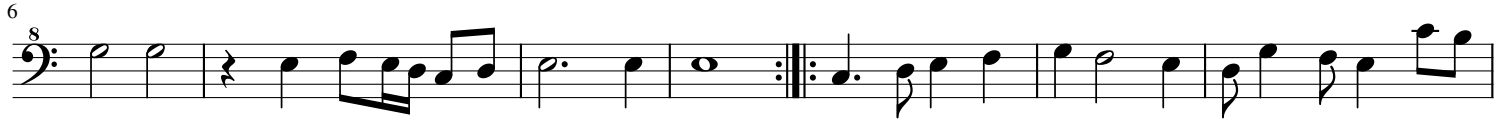
Fifth musical staff, measures 22-25. Measure 22: A1 (quarter), G1 (quarter), F#1 (quarter), E1 (quarter). Measure 23: D2 (quarter), C2 (quarter), B1 (quarter), A1 (quarter). Measure 24: G1 (quarter), F#1 (quarter), E1 (quarter), D1 (quarter). Measure 25: C1 (quarter), B0 (quarter), A0 (quarter), G0 (quarter). A repeat sign is present at the end of measure 25.

Bass 1

# Pavane

(Paduana für 5 Posaunen)

Heinrich Ulrecht

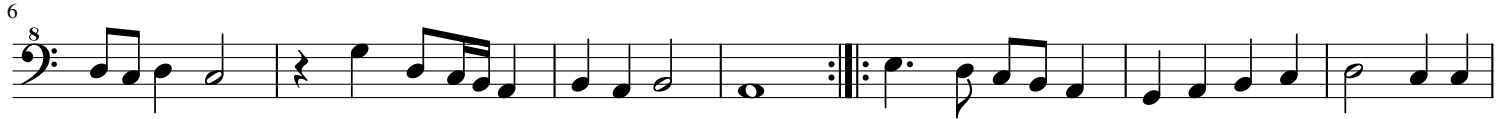


Bass 2

# Pavane

(Paduana für 5 Posaunen)

Heinrich Ulrecht



Bass 3

# Pavane

(Paduana für 5 Posaunen)

Heinrich Ulrecht

